

# WORKSHOP DEALS!

Don't miss out! - buy now and save \$\$\$!!!

2022

SAVE  
\$100



# RK VH0415  
1400W Heavy Duty Wet  
& Dry Vacuum - 72L

FREEBIES



# TM12DC  
12CFM, 2HP Dual Control  
Compressor - 50L

SAVE  
\$200



# WT160MP  
160A Multi-Process  
Inverter Welder

# GT3800Ei  
3800W Electric Start  
Inverter Generator



SAVE  
\$50

2x  
USB  
OUTLETS

2x  
15A 230V  
OUTLETS

FREEBIES



SEE INSIDE FOR MORE GREAT DEALS ►  
February - March 2022



# AIR COMPRESSOR

www.aircommand.co.nz



## 12CFM, 2HP Dual Control Compressor - 50L

#TM12DC

- Dual Control Function
  - Stop/Start function ideal for normal workshop use
  - Constant run function for use with poor power supply (e.g. generator use)
- Best displacement 11.1cfm, 315L/min
- Large 50L tank
- Heavy Duty 2HP Italian Motor with thermal overload
- 750 x 350 x 750mm (LxWxH), 49kg

SAVE  
\$200



~~\$2195.00~~  
**\$1995** +gst  
(\$2,294.25 incl.gst)



Made in Italy



10A PLUG



2 YEAR 100% WARRANTY



## 10 HP Industrial Three Phase Compressor - 270L Tank

#IND10.0

- Best Displacement 44cfm, 1246L/min
- Large 270L tank perfect for factories and automotive repair shops
- 1600 x 580 x 1210mm (LxWxH), 176kg
- Capable of running 3 air tools simultaneously

FREE!  
20M AIR HOSE  
#AC3820HR  
Worth over \$200



**\$5695** +gst  
(\$6,549.25 incl.gst)



THREE PHASE



Made in Italy



2 YEAR 100% WARRANTY



## 3.0HP Direct Drive Compressor - 50L

#TA3050

- 3.0hp induction motor
- 50 litre tank capacity
- Direct drive design
- Super duty cast iron v-twin pump
- 115psi (max.) pressure
- Pump displacement 360L/min, 12.7cfm
- Twin gauge with air regulator
- 1/4" ARO type coupler.

**\$549** +gst  
(\$631.35 incl.gst)



FREE!  
AIR HOSE 3/8" x 20M #AC20HS  
(worth over \$75!)



10A PLUG



## Base Mounted Petrol Compressor 8HP

#AC19P

- Powerful 8 HP electric start petrol motor
- Optional 25L Tank Available
- Low revving, heavy duty cast iron pump for longevity and reliability
- Air Delivery (@ working pressure) 477L/min (16.8cfm)
- Dimensions 950x350x520 (without handles), 70kg



FREE!  
15M AIR HOSE REEL  
#AC3815HR  
Worth over \$200



ELECTRIC START

**\$1695** +gst  
(\$1949.25 incl.gst)



## 8HP Electric Start Petrol Compressor - 120L

#AC21P

- Powerful 8 HP electric start petrol motor
- Large 120L receiver
- Low revving, heavy duty cast iron pump for longevity and reliability
- Air Delivery (@ working pressure) 477L/min (16.8cfm)
- Max Pressure 130psi



FREE!  
15M AIR HOSE  
#AC3815HR  
Worth over \$200



ELECTRIC START

**\$1995** +gst  
(\$2,294.25 incl.gst)



## Choosing an Air Compressor

Compressors are a highly versatile piece of equipment, with uses spanning from general household DIY through to highly specialized applications in the dairy and dentistry industries. Deciding on an air compressor that suits your needs can be challenging, below are some key considerations to take note of before you decide on your compressor.

- **Displacement** - This relates to air volume and determines how effective the tool used will be.
- **Tank Size** - This will determine your machine's duty cycle, and frequency of downtime
- **Frequency of Use** - The more frequently you use your machine, the more durable your machine will need to be
- **Power Source** - The power you have access to on site will be the biggest determining factor for this
- **Dimensions** - You may be limited by workshop space or require portability.

Other aspects that you may need to consider when selecting a compressor include:

- ☒ Pressure (or PSI rating)
- ☒ Noise level (or dBA Rating)
- ☒ Motor Type (i.e. Direct Drive or Belt Drive)
- ☒ Oiled vs Oil-less
- ☒ Dual Control
- ☒ Tools Being Used



If you have questions or would like further help with finding the right machine for your needs call our team on 0800 387 678



# GENERATOR

www.gtpower.co.nz

**GT**  
POWER

## 3800W Electric Start Inverter Generator

# GT3800Ei

- 3800W (max.) 3500W (rated)
- Push-button electric with EZ recoil for easy and reliable starting every time
- Low oil-shut down helps to prevent generator damage
- 2x 15A Outlets, 2x USB outlets
- Roll cage frame and compact design ensures portability
- Dimensions 530x350x490mm, 34kg

~~\$1445.00~~  
**\$1395** +gst  
(\$1,604.25 incl.gst)



2x  
USB  
OUTLETS

2x  
15A 230V  
OUTLETS

**FREE!**  
FUEL SET  
(#B200FS)



## 4600W Electric Start Inverter Generator

# GT4800Ei

- 4600W (max.) 4200W (rated)
- Push-button electric with EZ recoil for easy and reliable starting every time
- Low oil-shut down helps to prevent generator damage
- 2x 15A Outlets, 2x USB outlets
- Roll cage frame and compact design ensures portability - only 39.5kg
- Dimensions 530x350x490mm

~~\$1845.00~~  
**\$1795** +gst  
(\$2,064.25 incl.gst)



2x  
USB  
OUTLETS

2x  
15A 230V  
OUTLETS

**FREE!**  
FUEL SET  
(#B200FS)



## 7500W Electric Start Generator

# GT7000ESQ

- 7500W (max.) 7000W (cont.)
- Ideal for running power tools, workshop equipment and most small caddy welding machines, with super duty alternator / copper windings
- Industrial air cleaner & muffler system for cleaner, quieter operating
- Heavy duty solid wheel kit with rubber tyres for portability
- Electric start and recoil
- 2 x 15A 230V outlets with 27A max.
- 25L fuel tank for up to 13hrs run-time.

~~\$1925.00~~  
**\$1895** +gst  
(\$2,179.25 incl.gst)



**FREE!**  
FUEL SET  
(#B200FS)



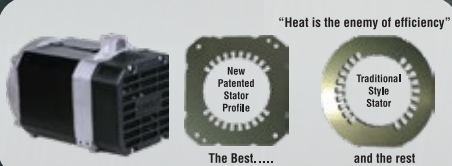
## PATENTED TOMAHAWK SQUARE PROFILE ALTERNATOR



This revolutionary new technology allows a quantum leap forward in power output, quality and long-term endurance. The new square profile alternator has been designed with durability and efficiency at the front of mind.

The Tomahawk square profile alternator design incorporates 25% more surface area than traditional designs, allowing for an average running temperature reduction of around 20%! This heat reduction allows for increased power output from equivalent cc ratings by up to 10%.

Cooler running temperatures mean better durability and engine/alternator life, giving you better value for money out of your generator. Square alternator technology also offers reduced vibrations and smoother harmonics. For a highly efficient, durable generator look for the Tomahawk alternator icon.



**SAVE OVER \$100**

## 15m Heavy Duty Extension Cord

#16895

- 15A plug - 28A rated continuous use
- ANZS approved
- For high current applications like induction motor start ups and welding equipment
- Thicker core for effective electricity transfer
- 12 month warranty.

~~\$220.70~~  
**\$120** +gst  
(\$138.00 incl.gst)





## 1740 psi High Pressure Waterblaster

# K2160TST

- 11L/min, 2030psi cleaning power
- Ceramic coated pistons, and brass pump head for durability
- Dry run safety & Total stop for reduced wear
- Integrated hose drum with 15m high pressure hose
- Includes "dirtkiller" turbo nozzle

**FREE!**  
5 LITRES  
TRANSWASH  
#BSLTW



**\$2495**<sup>+gst</sup>

(\$2,869.25 incl.gst)



Made in Germany

kranzle

## 3 phase 2610 Psi High Pressure Waterblaster

# QK1200TST

- 19.4L/min, 2610psi cleaning power
- Total stop system improves pump life and reduces power consumption
- Graphite packed seals for dry run safety
- Integrated hose drum with 20m high pressure hose
- Includes turbo nozzle

**FREE!**  
5 LITRES  
TRANSWASH  
#BSLTW



**\$5795**<sup>+gst</sup>

(\$6,664.25 incl.gst)

Made in Germany



kranzle

## 2830 psi High Pressure Steam Cleaner

#KTH895-1

- 14.9L/min, 2830psi cleaning power
- Total Stop system for reduced wear
- 4-way Safety Management system with overload protection
- Hose drum with 20m high pressure hose
- Digital thermostat control for steam up to 155°C
- 1050x800x1000mm / 220kg

**\$9795**<sup>+gst</sup>

(\$11264.25 incl.gst)

**FREE!**  
5 LITRES  
TRANSWASH  
#BSLTW



**Tidy storage system**  
Practical stowing of the trigger gun with safety catch and lances

**Cleaning Agent Intake**  
Injector system for dispensing of cleaning agents

**Integrated Hose drum**  
Practical design and features a longer length high-pressure hose complete with folding crank (Version incl. hose drum)

**Digital operating panel**  
to control the water temperature and view cold/hot use operating time management

**Removable covers**  
Protect the mechanical components from environmental factors and provide convenient access

**Parking brake**  
For a secure stationary position

Made in Germany



kranzle

## 2990psi Three Phase Steam Cleaner

#HYPER2021-INOX

Three phase, powerful 2990psi machine with 21L/min cleaning power! Diesel fired stainless steel boiler for 140°C water, capable of destroying the most stubborn grease & grime.

- Stainless steel boiler coil for steam up to 140°C
- Variable flow handgun
- 4-pole motor & low speed HD pump for reduced wear
- 10m high pressure hose included
- 3 phase plug included
- On board detergent tank



~~\$8895.00~~  
**\$8495**<sup>+gst</sup>

(\$9,769.25 incl.gst)



LAVOR **PRO**

## Professional Steam Generator

# KOLUMBO

Removes all germs, dirt and grime from surfaces with little effort. With no residue left at end of cleaning, the Kolumbo makes sanitisation tasks a breeze. Highly portable and easy to use this machine is ideal for stopping germs in their tracks.

- High efficiency stainless steel boiler produces 37.5kg steam per hour
- Discharge valve: allows a complete discharge of the boiler
- Temperature regulator: the temperature is set-up by an electronic regulator
- Integrated detergent tank with detergent delivery controller by the gun
- Unit can be continually refilled

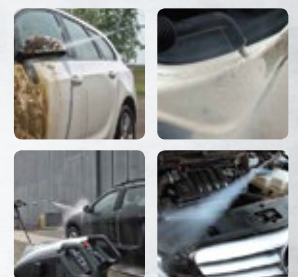
**SAVE \$1000**

~~\$10995.00~~  
**\$9995**<sup>+gst</sup>

(\$11,494.25 incl.gst)



LAVOR **PRO**





## What is most important feature in a vacuum?

The efficiency of a vacuum is measured by a number of factors, this includes air suction, motor power, and depression (vacuum power). While a high air suction is important, without a sufficient depression to match the effectiveness of the vacuum will be limited; this is true for the reverse where high depression will not result in an effective clean without a suitable rate of air suction.

The Duravac range has the perfect balance between suction, motor power, and depression to provide you with a superior cleaning experience no matter what the cleaning task. With a focus on superior value and quality you are sure to find a vacuum within the range to suit your needs.

For more information on the Duravac range visit  
**[www.vacmaster.co.nz](http://www.vacmaster.co.nz)**  
 or call our helpline on 0800 387 678

## VACUUM

### 1200W Dry Vacuum - 22L

# RK VH0103

- High impact tank with top-mount motor improves air flow efficiency
- Durable and stable castors for improved manoeuvrability
- Positive locking hose inlet on tank
- Swivel hose ends for ease of use
- Lightweight with carry handle for portability

Power	1200W
Suction Power	2400MMH20
Air Flow	129m3/hr
Tank Capacity	22L
Weight	10kg



Made in Italy



~~\$525.00~~  
**\$495** +gst  
 (\$569.25 incl.gst)



### 1400W Heavy Duty Wet & Dry Vacuum - 72L

# RK VH0415

- Fitted with float to prevent tank overflows protecting motor and internal electrics
- Powerful suction from by-pass motor
- Sturdy tank corrosion resistant tilt tank
- Handle and wheels allow for easy manoeuvrability around site

Power	1400W
Suction Power	2470MMH20
Air Flow	210m3/hr
Tank Capacity	72L
Weight	19kg



Made in Italy



~~\$1395.00~~  
**\$1295** +gst  
 (\$1,489.25 incl.gst)



### 1400W WET & DRY VACUUM - 27L

# RK VH0115

- High impact tank with top-mount motor
- High suction from a compact package
- Swivel end cuff for easy movement
- Impact and corrosion resistant tank
- Quiet operation
- Manufactured in Italy

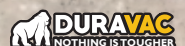
Power	1400W
Suction Power	2470MMH20
Air Flow	210m3/hr
Tank Capacity	27L
Weight	19kg



Made in Italy



~~\$625.00~~  
**\$595** +gst  
 (\$684.25 incl.gst)





# WELDING

www.strata.co.nz



## 200A Inverter MMA/Lift TIG Welder

# EZIARC205

- 10-160A MMA/ Lift TIG output
- IGBT Inverter technology for smooth & stable welding output
- Lift TIG welding operation for precision in aesthetically important welding jobs (with TIG torch optional)
- Optional carry case available
- 390x146x278mm / 2.6kg
- Includes: 4m MMA lead set & 3m heavy-duty earth lead set

**FREE!**  
Welding Protection Bag #SWPB



**\$525**<sup>+gst</sup>

(\$603.75 incl.gst)



## 315A Compact Inverter MIG/MMA Welder

# ADVANCEMIG315C

- 15-315A MIG output/ 10-315A MMA output
- Highly versatile machine with lift ARC & DC TIG functions (TIG Torch Optional)
- Optional trolley with integrated storage tray available
- Machine size 26kg / 680x240x450mm
- Includes: 4m MMA Lead set, 3m Heavy duty earth lead set, MT360-4E MIG Torch, Argon gas regulator & adaptor, Gas Hose, MIG Drive Rollers (4v V-groove / 2x Knurled)

**FREE!**  
Welding Helmet #SV4000 (worth over \$450!)



**\$2995**<sup>+gst</sup>

(\$3,444.25 incl.gst)



## 315A Compact Inverter MIG Welder Package

# ADVANCEMIG315C PACK

- 15-315A MIG output/ 10-315A MMA output
- Highly versatile machine with MIG, MMA & Lift TIG functions (TIG Torch Optional)
- Adjustable wave form (inductance) for great control and smooth welding results
- Machine size 26kg / 680x240x450mm
- Includes: Trolley with storage unit, 4m MMA Lead set, 3m Heavy duty earth lead set, MT360-4E MIG Torch, Argon gas regulator & adaptor, Gas Hose, MIG Drive Rollers (4v v-groove / 2x Knurled)

**FREE!**  
Welding Helmet #SV4000 (worth over \$450!)



**\$3495**<sup>+gst</sup>

(\$4,019.25 incl.gst)



## 500A SYNERGIC MULTI-PROCESS MIG WELDER

# ADVANCEMIG500 PACK

- 40-500A output
- Highly versatile machine with MIG, MMA & Lift TIG functions (TIG Torch Optional)
- Air-cooled package
- Optional 10m interconnect cable
- 1050 x 440 x 1450mm/110kg
- Includes: Industrial welding trolley, Storage Unit, 4m Arc Lead Set, 3m Heavy Duty Earth Lead Set, Argon Regulator, Gas Hose, Drive rollers (4x V-groove, 2x Knurled)

**FREE!**  
Optrel Welding Helmet # 24222 (Worth Over \$900!)



**\$5895**<sup>+gst</sup>

(\$6,779.25 incl.gst)



## 500A Synergic Inverter MIG/MMA/TIG Welder Package – Water Cooled

# ADVANCEMIG500WC PACK

- 40-500A output
- Highly versatile machine with MIG, MMA & Lift TIG functions (TIG Torch Optional)
- Water-cooled package
- Optional 10m interconnect cable
- 1050 x 440 x 1450mm/110kg
- Includes: Industrial welding trolley, Storage Unit, 4m Arc Lead Set, 3m Heavy Duty Earth Lead Set, Argon Regulator, Gas Hose, Drive rollers (4x V-groove, 2x Knurled)

**FREE!**  
Optrel Welding Helmet # 24222 (Worth Over \$900!)



**\$6995**<sup>+gst</sup>

(\$8,044.25 incl.gst)



## 3 phase Plasma Cutter

# ADVANCECUT 125

- 20-120A output, Cuts 50mm steel/45mm Aluminium
- Production tested to 440V ensuring rugged reliability
- Designed for operating with automated CNC cutting equipment
- 640x240x445mm / 33kg
- Includes: 6m TH-125 plasma torch, 3m Heavy Duty Earth Lead Set, Air Regulator/Water Trap

**SAVE \$200**

~~\$4895.00~~<sup>+gst</sup>

**\$4695**<sup>+gst</sup>

(\$5,399.25 incl.gst)





# WELDING

www.weldtech.net.nz

**weldtech**

## 140A MMA Inverter Welder

# WT141ARC

- 10-140A MMA output
- Automatic arc force, hot start and anti-stick control
- Welds up-to 8mm steel thickness
- 280x120x190mm/3.2kg

~~\$215.00~~  
**\$195**<sup>+gst</sup>  
(\$224.25 incl.gst)



**Includes**  
2.5m MMA Lead w/  
Twist Lock Electrode  
Holder & 1.5M  
Earth Lead



**18 MONTH\***  
**WARRANTY**  
with product registration

**weldtech**

## 160A Multi-Process Inverter Welder

# WT160MP

- 40-160A output
- Highly versatile machine with MIG, MMA & Lift TIG Output (TIG torch Optional)
- Gas & Gasless Capabilities
- 395x165x290mm/ 9kg

**Includes**  
MT150-3DC MIG Torch,  
3M Earth Lead Set  
4M MMA Lead Set  
Gas Hose

**\$525**<sup>+gst</sup>  
(\$603.75 incl.gst)



**FREE!**  
5 KG FLUXCORE  
(#WT-MW5KG08FC)  
(Worth over \$100)

**FREE!**  
WELDING HELMET  
(#WT350)  
(Worth Over \$150)



**18 MONTH\***  
**WARRANTY**  
with product registration

**weldtech**

## Multi-Process Inverter Arc-Tig-Plasma Cutter

#ATP160

- 10-30A plasma /15-160A TIG/ 15-140A MMA output
- 3-in-1 Plasma Cutter, MMA & DC TIG machine
- Featured wave-form control system
- Automatic input voltage fluctuation controller
- 220x465x330mm/ 18kg
- Cuts up to 8mm

~~\$695.00~~  
**\$625**<sup>+gst</sup>  
(\$718.75 incl.gst)

**SAVE**  
**\$70**



**INCLUDES**  
WT-PT31 Plasma Torch  
WP17 TIG Torch  
3m Earth Lead Set  
4m MMA Lead Set  
Gas Hose  
Gas Regulator  
Plasma Consumables Starter Kit  
TIG Consumables Starter Kit



**18 MONTH\***  
**TRADE WARRANTY**  
\*with product registration

**weldtech**

## WELDING SCREENS

- 1.8 x 1.8m
- Protect the workshop and others from welding sparks
- Comes with frame.

**ORANGE** #NWWS18-O

**GREEN** #NWWS18-G

~~\$246.00~~  
**\$220**<sup>+gst</sup>  
(\$253.00 incl.gst)





# WELDING HELMET

www.optrel.co.nz



**Check Out The New Optrel Website For More Information On These Helmets**

## PANORAMAXX WELDING HELMETS # PANORAMAXX

The Panoramaxx offers a field of vision that is 6x larger than a standard ADF welding helmet. With its unique ADF the lens is closer to the eyes, providing maximum viewing comfort while maintaining protection.

Combined with light state 2.5, automated shade level adjustment 5-12, and lightweight design, this helmet is comfortable and easy to use. The multi-sensor detection ensures perfect regulation of the auto-darkening filter, and the rechargeable power-pack removes the need for changing batteries, helping to improve safety and convenience.



incl. PAPR

**\$2749** +gst

(\$3,161.35 incl. gst)



## Clearmaxx

Unlimited clear view of your workspace, filtered and clear air with adjustable air distribution make the clearmaxx the unique face and respiratory protection system with the highest safety level. A rotary switch enables you to feed 20% of the air cooling to the forehead area. Minimized weight of 330g and an ergonomic fit sets new benchmarks in wearing comfort.

- TH3 filtration
- 18hr Battery
- 240L/min Airflow
- Ideal for MDF fabrication and dusty working environments.

**\$1959** +gst

(\$2,252.85 incl. gst)



Scan Here For More Information on TH3 Filtration



## Auto Darkening Welding Helmet

# E684

Keeps welders better protected, enables them to perform their job more efficiently, with greater accuracy and precision every time.

- Silver heat reflective coating reduces inner temperature by 28%!
- Twilight function auto adjusts, reducing eye fatigue
- Autopilot with protection levels 4/5-13
- Ultra high definition lens.

HELMET only

**\$819** +gst

(\$941.85 incl. gst)

incl. PAPR

**\$2699** +gst

(\$3,103.85 incl. gst)



## 4-Sensor Auto-darkening Welding Helmet ADF 100 x 67

# WT350

- Lightweight
- Wide view (100 x 67mm)
- True colour
- 4 Arc Sensors for reliable arc detection
- 1/1/1/2 optical clarity
- Suitable for MIG, MMA, TIG & Grinding

**\$155** +gst

(\$178.25 incl. gst)



TRUE COLOUR



Super Large 100x67mm

weldtech

## WELDING ELECTRODES

### Low hydrogen electrodes 5kg

2.6mm 7018

#HY26LH5KG

~~\$52.00~~

**\$49.00** +gst

(\$56.35 incl. gst)

3.2mm 7018

#HY32LH5KG

~~\$47.00~~

**\$45.00** +gst

(\$51.75 incl. gst)

4.0mm 7018

#HY40LH5KG

~~\$47.00~~

**\$45.00** +gst

(\$51.75 incl. gst)

### GP electrodes 5kg

2.6mm 6013

#HY26GP5KG

~~\$47.00~~

**\$45.00** +gst

(\$51.75 incl. gst)

3.2mm 6013

#HY32GP5KG

~~\$44.00~~

**\$40.00** +gst

(\$46.00 incl. gst)

4.0mm 6013

#HY40GP5KG

~~\$44.00~~

**\$40.00** +gst

(\$46.00 incl. gst)



**HYUNDAI**

All prices exclude gst and valid till end of march 2022, or while stocks last.